



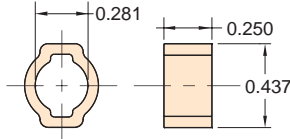
CLIPPARD CLAMPS

5000-1



Quick Set Hose Clamps

Type: Zinc plated steel
Use: 5000-1 with Buna N hose
 twin vinyl hose

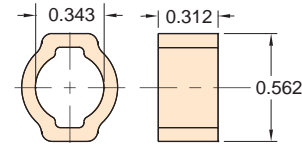


5000-1A



Quick Set Hose Clamps

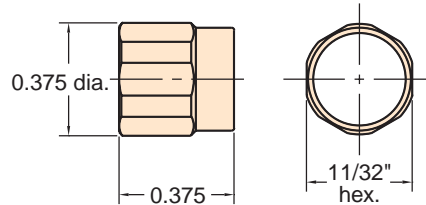
Type: Zinc plated steel
Use: 5000-1A with braided hose



5000-2



Reusable Hose Clamps



Material: Brass, self-threading, reusable

Use With: 11765 Buna-N hose VYH1-0804-CLT vinyl hose and Clippard hose fittings

Installation: Slip sleeve over hose, push onto fitting, then screw into place; tighten with wrench

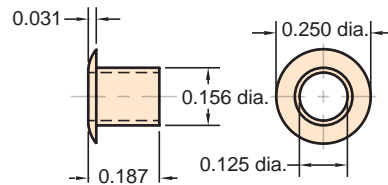
Options: (-NP)



5000-4



Press-On Hose Clamp



Material: Brass, press-on hose clamp

Use: for VYH1-0402-CLT hose 1/16" I.D. vinyl

Installation: Simply place hose clamp over hose with flange end out; then press hose partially onto fitting, then slide clamp back toward fitting to secure

Options: (-NP)



Polyethylene vs Vinyl vs Polyurethane

Polyurethane offers a wider range of chemical compatibility than Vinyl, it may be used at much higher temperatures and clamps are not needed when used with barb fittings. Linear low density polyethylene offers a lower cost alternative to polyurethane and superior environmental stress crack resistance over standard polyethylene. Both polyurethane and polyethylene are FDA approved.

Typical Hose & Tubing Bend Radii

When using hose or tubing, care should always be taken to avoid sharp bends to prevent compressing the inside diameter of the hose or tubing and restricting flow. For extremely close connections, allow a short loop of hose to avoid crimping.

Clippard Hose or Tubing		I.D.	O.D.	Min. Bend Radius
3811-1	Copper Tube	1/16"	1/8"	3 x dia.
NYT1-XXX	Nylon Tubing	3/32"	1/8"	3 x dia.
VYH1-XXX	Vinyl Hose	1/16"	1/8"	3 x dia.
VYH1-XXX	Vinyl Hose	1/8"	1/4"	2 x dia.
VYH2-XXX	Dual Vinyl Hose	1/8"	1/4"	2 x dia.
URH1-XXX	85 Duro. Urethane Hose	1/16"	1/8"	2 x dia.
URH8-XXX	Ribbon 85 Duro. Urethane	1/16"	1/8"	-
URH1-XXX	85 Duro. Urethane Hose	1/8"	1/4"	2 x dia.
URH2-XXX	Dual 85 Duro. Urethane	1/8"	1/4"	3 x dia.
URH8-0804-XXX	Ribbon 85 Duro. Urethane	1/8"	1/4"	-
URT1-0503-XXX	95 Duro. Urethane Tubing	3/32"	5/32"	3 x dia.
URT1-0604M-XXX	95 Duro. Urethane Tubing	4 mm	6 mm	2 x dia.
URT1-0805-XXX	95 Duro. Urethane Tubing	0.160"	1/4"	2 x dia.
URT1-1208-XXX	95 Duro. Urethane Tubing	0.245"	3/8"	3 x dia.
PET1-0503-XXX	Polyethylene Tubing	0.106"	5/32"	3 x dia.
PET1-0604M-XXX	Polyethylene Tubing	4 mm	6 mm	5 x dia.
PET1-0805-XXX	Polyethylene Tubing	0.170"	1/4"	5 x dia.
PET1-1208-XXX	Polyethylene Tubing	1/4"	3/8"	5 x dia.